

ITAUKEI LAND AVAILABLE TOURISM SITES

iTaukei Land Trust Board (TLTB) is a trustee of itaukei land. It leases land for various purposes including tourism development. If you are interested in investing in Fiji's growing tourism sector and owning a tourism business, please contact TLTB immediately for this available sites and locations:

1

Qwe Beachfront, YASAWA



Pleasant and exclusive beachfront with elevated background ideal for accommodation bure and villa that enjoys cool sea breeze overlooking the blue waters with sight of the sunset every day. The land is situated on the eastern side of Naviti Island behind Sa Beachfront and Soso Bay – 2-hours speedboat from Denarau Marina. The site has an area of 64.8478 acres (26.2429Ha) [subject to survey].

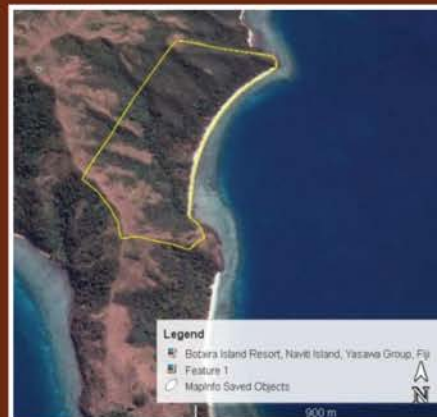


2



Sa Beach, YASAWA

A pleasant and exclusive beach front with elevated background ideal for accommodation bure and villa development that enjoys cool sea breeze overlooking the blue waters towards the main island of Viti Levu and Lautoka City. Located along the Soso Bay within the island of Naviti in Yasawa and is accessible by a 2-hours speedboat from the Denarau Marina, in Nadi. The site has an area of 97.6485 acres (39.5169Ha) [subject to survey].



3

Taunovo, Sesevo & Nasau, YASAWA



Site blessed with white sandy beaches, shallow to crystal blue waters and swaying palm trees. Landscape is flat to undulated slopes fenced by backland ridge ideal for private residential villas overlooking the surrounding Yasawa Group. Approximately 45 minutes boat ride from Lautoka or 3 hours from Denarau with Awesome Adventure cruises. Area: 55.70 acres (22.55Ha).



4



Natutolu, BUA

Land consist table land on hill top overlooking Kubulau Bay towards Savusavu and Namenalala Island and its marine protected area. Beachfront blessed with white sandy beach accommodating relaxing atmosphere experienced only in the friendly north. Approximately 45-minutes drive from Nabouwalu Jetty. Area: 4.2978 acres (1.740Ha).



5



Moturiki Island, BEQA

The exclusive untapped island of approximately 45.0 acres (18.2186Ha) is surrounded by coral gardens, fronting the famous surfing frigate passage in Beqa. Moturiki Island is situated next to Beqa Island opposite Dakuni Village and is accessible by boat 45 minutes from the famous Pacific Harbour Marina or 30 minutes from Navua Town.

6

Delailoa, Lomaiviti



Site situated on elevated location with beautiful panoramic view around the Lomaiviti island groups including the most famous Wakaya Island. Rolling slopes extends to flat coastal area with beautiful beach front, ideal for integrated resort blended with private residence and villa development. The site is 40 minutes from Wakaya Island Resort - the most exclusive hotel in the Pacific Region. Location is also 45 minutes from the Old Capital of Fiji, Levuka. Area: 123 acres (50Ha) [subject to survey].



Bakula, YASAWA

7

Site is blessed with white sandy beaches swaying palms and crystal blue waters for dive and snorkeling . Topography flat land with gentle slopes at backland. Ideal for resort, private res villa development. Approximately 45-minutes boat ride from Lautoka (direct) or 3 hours from Denarau port via Awesome Adventure Cruises. Area: 43.0 acres (17.402Ha) [surveyed].



8



Korolevu Beach, Beqa

Site is blessed with white sandy beaches, swaying palms and crystal blue waters for dive and snorkeling. Flat land with gentle slopes - ideal for resort, private residential villa development. Approximately 45 minutes boat ride from Lautoka or 3 hours from Port Denarau via Awesome Adventure Cruises. Area: 20.0 acres (8.097Ha) [subject to survey].



Conditions Apply!

Contact:

Mr. Vimlesh Chand
Manager Tourism
Development
iTaukei Land Trust Board
Private Mail Bag
Nadi Airport

Level 1
Airport Central Building,
NAMAKA

(T): 6723 771
(F): 6723 229
(M): 9995 904
(E): vchand@tltb.com.fj